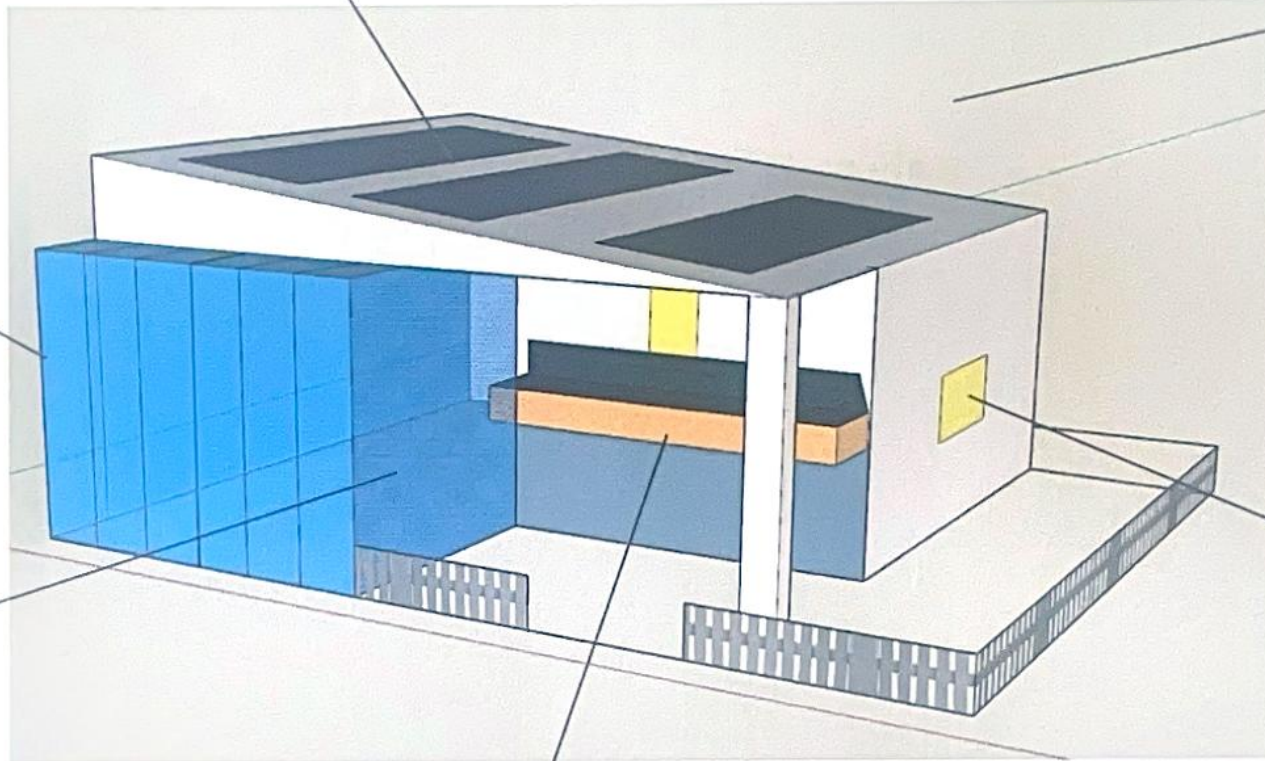


Jersey Aeroclub bus shelter design

Solar panels to power the charging points inside.

Glass sticks out so when the bus comes you can see it and still be inside if its a rainy day.

I Built a slanted roof to a plane type style.



Safety so children don't run onto the road.

Time table inside and outside so people know what time the bus will come.

Bench inside for people to sit in comfort.